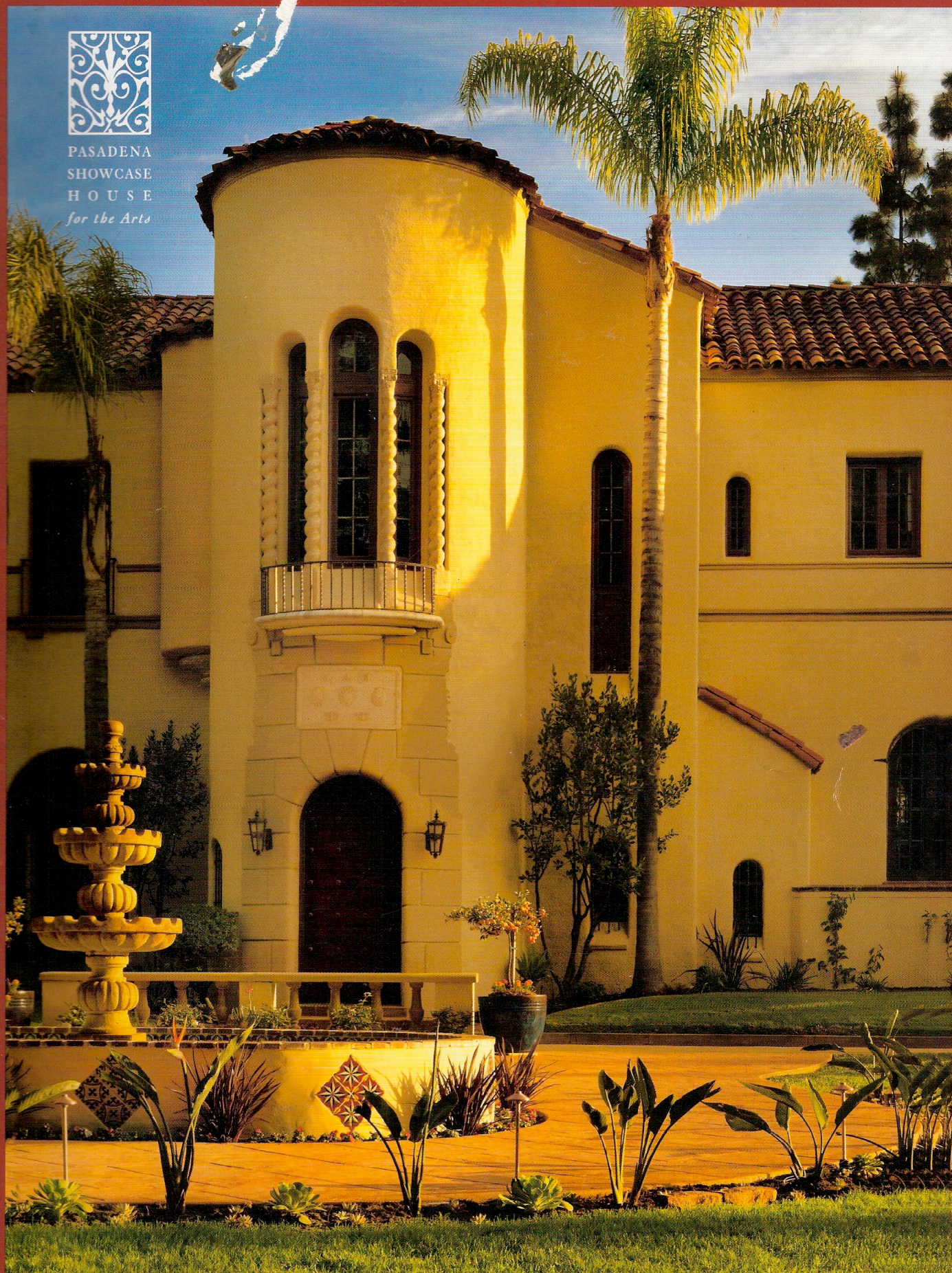
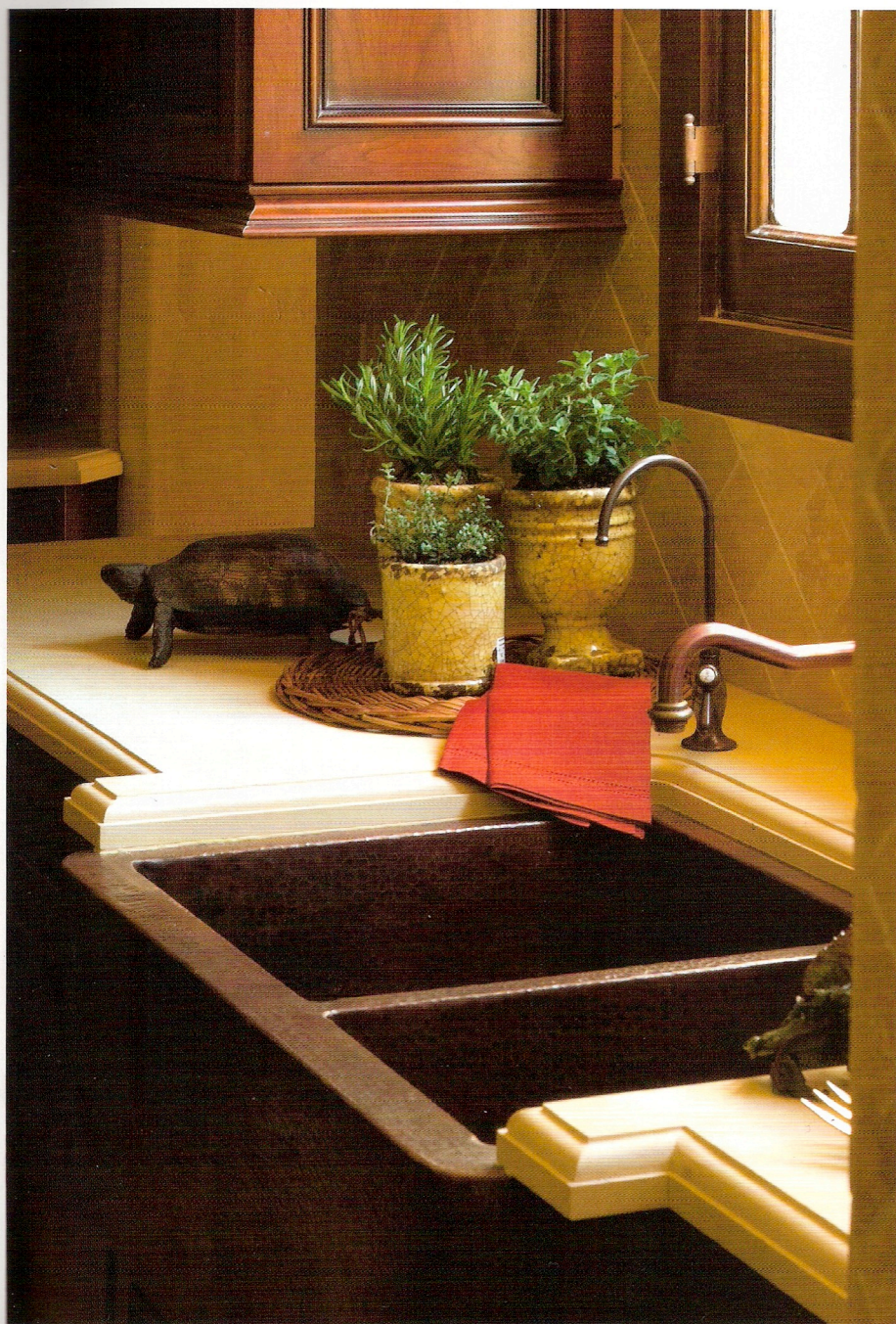




PASADENA
SHOWCASE
HOUSE
for the Arts



2008 Pasadena Showcase House of Design

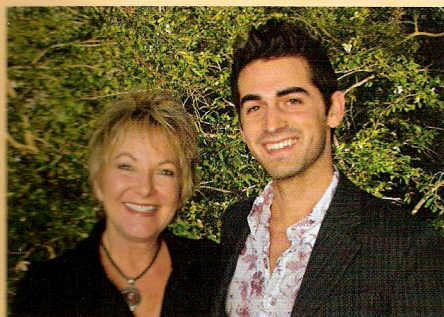


he name literally translates to the Kitchen of the Pomegranates. There are elements of luxury, style, grandeur, all combined with that earthy Spanish flair befitting this amazing estate.

As you move through the space, you'll notice a rich texture of design elements unfolding before your eyes. There are the deep hewn custom cabinets that replicate the decorative woodwork from the rest of the home. There is the rustic yet sophisticated tumbled marble floor that blends seamlessly with the gorgeous red accent tiles on the walls. The space is lit by a magnificent iron chandelier accentuated by a state-of-the-art lighting system. The hand carved limestone kitchen hood anchors the substantial range, while the rest of the appliances are tucked away inside the cabinetry.

The island is topped with exquisite red marble that has a triple edge detail. A polished red travertine floor mosaic really sets the island apart from the rest of the kitchen. The built-in china cabinet is detailed with corbels, carvings, apothecary drawers, and wire mesh doors while it remains a functional piece storing the A/V equipment for the nearby flat screen TV.

The finishing touches to the room include unique furniture and accessories, hand printed window shades, raised plaster ceiling details which replicates the entry detail.



SAXONY STREET, INC.

*Sue Potter, Allied ASID, IIDA
Joshua Cain*

11659 Riverside Drive
Valley Village, CA 91602
(818) 623-8001 / (818) 623-8006 fax
joshua@saxonystreet.com
sue@saxonystreet.com
www.saxonystreet.com



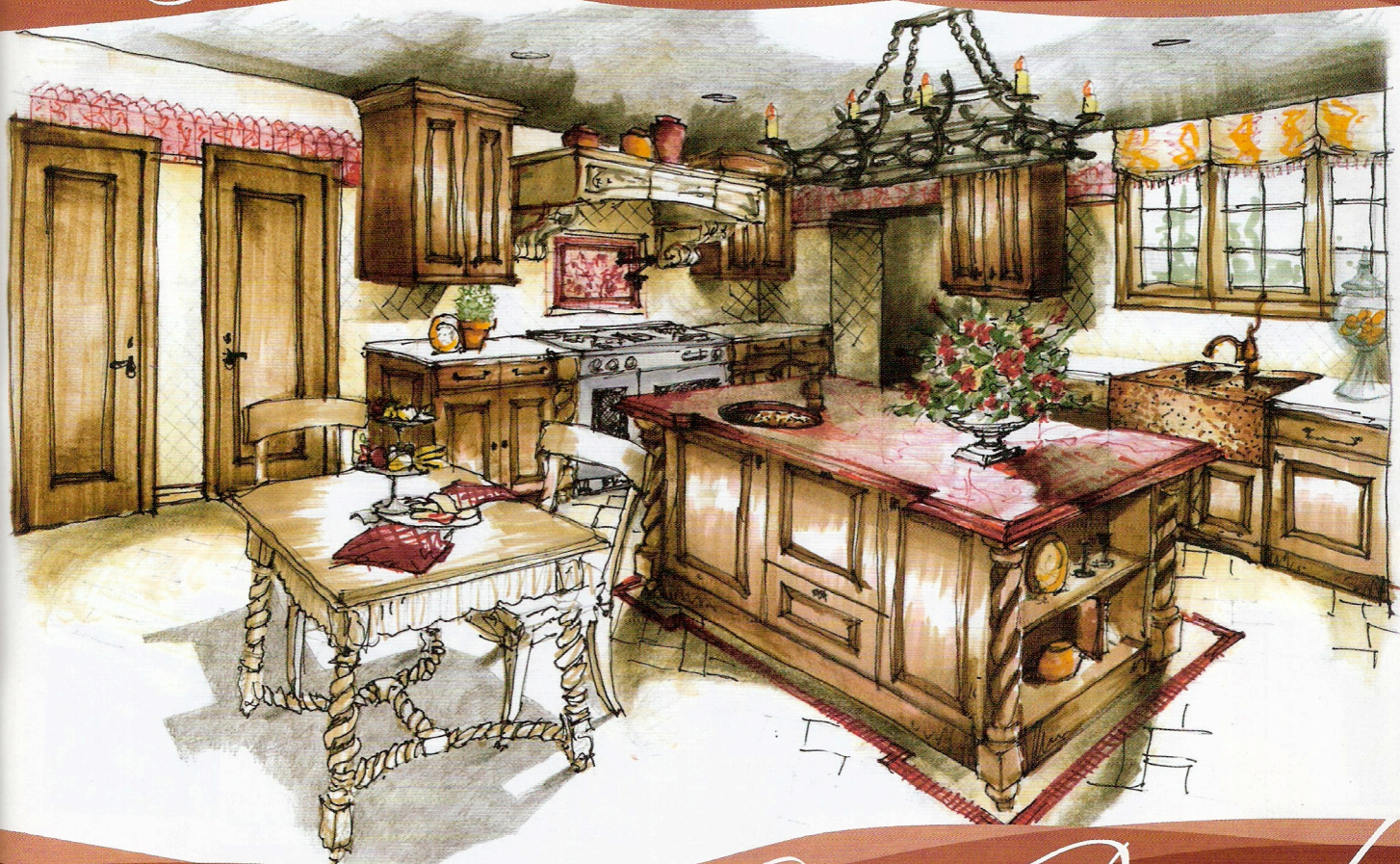
RESOURCES:

PAINT donated by Dunn-Edwards Paint Corporation • GENERAL CONTRACTOR: Stage One Inc. • STRUCTURAL CONSTRUCTION: Advanced Construction • STRUCTURAL ENGINEERING: Calcivic Engineering • DRYWALL, VENETIAN PLASTER, & SPECIALTY FINISHES (WALLS & CEILING): Al Garza • PAINTING, DOORS, & WINDOWS: 3 at Once • LEADED WINDOW RESTORATION: Tico Tech • CUSTOM CABINETRY & INSTALLATION: D'Christjan Fine Cabinetry & Design • STONE FLOORING & TILE: Materials Marketing • DECORATIVE TILE: Architerra • METAL TILE: Bronzework Studio • FLOOR MOSAIC: Astonish Marble • TILE & STONE INSTALLATION: Astonish Marble • COUNTERTOPS: Caeserstone • ISLAND COUNTER: Stonemart • SLAB FABRICATION: Astonish

Marble • STONE HOOD: Materials Marketing • STONE HOOD INSTALL: Tuscany Stoneworks • APPLIANCES: SUPPLIER: MD Appliances; MANUFACTURERS: Thermador, Fisher Paykel, U-line; INSTALLATION: Accurate Appliance Installations • PLUMBING: SUPPLIER: George's Pipe & Supply; PLUMBING FIXTURES: Altmans Soraya Faucets & Pot Filler; SOAP DISPENSER, AIR SWITCH, AIR GAP: Trim by Design • SINKS: Native Trails • FILTER FAUCETS: Water, Inc. • DISPOSALS: Insinkerator Evolution Series • INSTALLATION & LABOR: Fred Morrow Plumbing • ELECTRICAL CONTRACTOR: Espinoza Electric • DECORATIVE FIXTURES: Arte de Mexico • RECESSED FIXTURES & LIGHTING SYSTEM: Lightolier, Kichler • SUPPLIER: F.I.R.E. LTD • LIGHTING DESIGN: F.I.R.E. LTD

• INSTALLATION: Espinoza Electric • WINDOW TREATMENTS: FABRIC: Duralee Fabrics; FABRICATION: Superior Shades • FURNITURE: Charles & Charles, Arte de Mexico, Saxony Street Private Collection, Dan Marty Designs • CABINET HARDWARE: Richelieu • ACCESSORIES: Arte de Mexico, Charles & Charles, Reborn Antiques, Williams Sonoma, Susanne Hollis, Inc., Saxony Street Private Collection, Dan Marty Designs • ARTWORK: Founders Gallery, Saxony Street Private Collection • FLOWERS: It's a Blooming Business • AUDIO VISUAL: Foothill Integrated Systems • FABRIC AND CARPET PROTECTION: Fibercare and Service • RUG AND UPHOLSTERY CLEANING: Spotless Industries

You Dream



We Create

This year's Pasadena Showcase Kitchen could only have been conceived through this incomparable collection of remarkable, specialized consultants. The design itself was produced by the creative minds of Saxony Street Design Group. The timely and precise construction was completed by the prestigious Stage One Inc. The impeccable cabinetry was hand built by the artisans at D'Christjan Fine Cabinetry. And the detailed stone fabrication and tile installation was expertly finished by the finest tradesmen from Astonish Marble.

*Timeless
Elegance*



D Christian
Fine Cabinet Design & Manufacturing
909.517.3200 | www.dchristian.com

NKB
National Kitchen & Bath